



## Bampton Drive, Mill Hill, NW7

**£735,000**

A beautifully presented and spacious family home nestled in a quiet cul-de-sac off Page Street, ideally located within walking distance of Mill Hill Broadway with its array of coffee shops, restaurants, boutiques, and Thameslink station.

The ground floor offers a bright and expansive living/dining room, a stunning conservatory that opens onto the garden, a high-specification kitchen, and a convenient downstairs W/C, all designed for modern family living and entertaining.

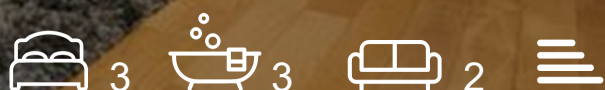
On the first floor, there are two generous double bedrooms, one with an en-suite, along with a separate family bathroom. The main bedroom occupies the entire top floor and features a luxurious en-suite bathroom and a walk-in wardrobe.

Additional benefits include off-street parking for two cars and a private garden with sole access. Situated close to popular local schools and offered in excellent condition throughout, early viewing is highly recommended. Sole Agent.

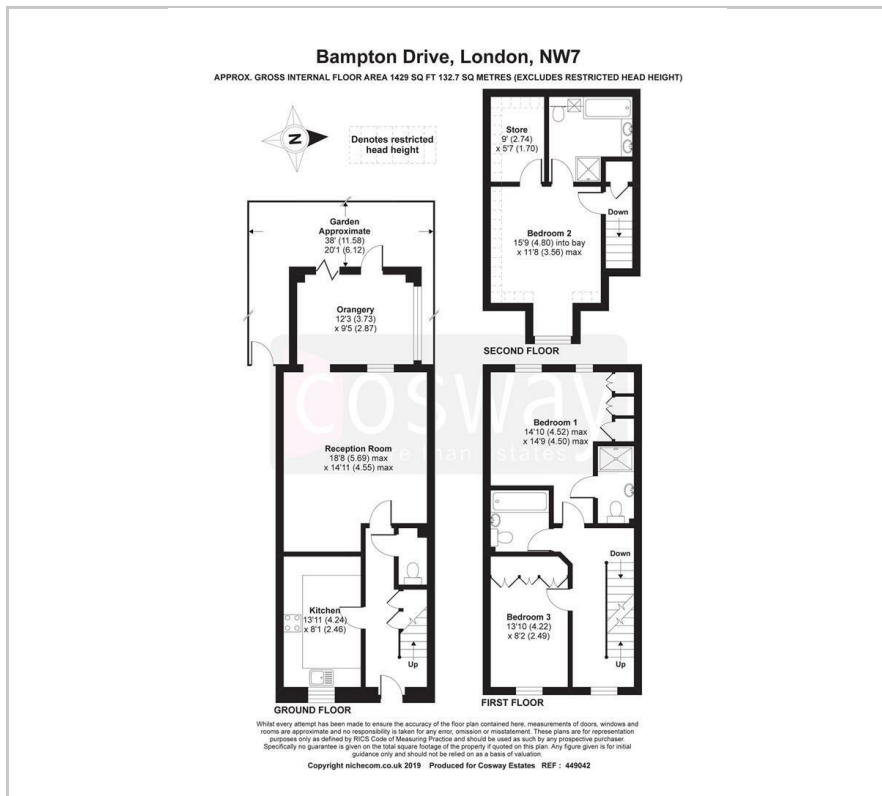
### Viewing

Please contact our Mill Hill Office on 02089590011 if you wish to arrange a viewing appointment for this property or require further information.

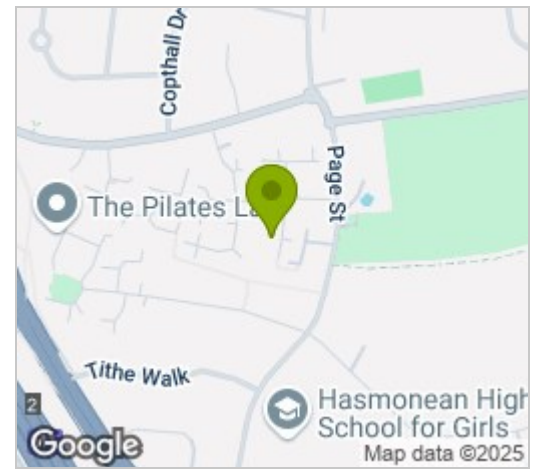
- 1429 SQ FT
- MAIN BEDROOM WITH WALK IN WARDROBE AND EN-SUITE
- SPACIOUS OPEN PLAN LIVING - DINING ROOM
- MODERN KITCHEN
- 3 BATHROOMS
- OFF-STREET PARKING
- CLOSE TO LOCAL SCHOOLS
- EXCELLENT TRANSPORT LINKS
- CONSERVATORY
- READY TO MOVE IN



# Floor Plan



# Area Map



# Energy Efficiency Graph



These particulars, whilst believed to be accurate are set out as a general outline only for guidance and do not constitute any part of an offer or contract. Intending purchasers should not rely on them as statements of representation of fact, but must satisfy themselves by inspection or otherwise as to their accuracy. No person in this firm's employment has the authority to make or give any representation or warranty in respect of the property.